



## 27 Folia Street Lumsden

### Easy Modern Living

If you are contemplating a move to popular Lumsden away from the hustle and bustle but still want modern warm and private then this 200m<sup>2</sup> family home is a must view. The spacious three double bedroom two bathroom home is situated on a 1012m<sup>2</sup> fully fenced section only a short stroll to the local schools amenities. The home can also boast a large open plan living area with all the modern fittings you would expect from a modern build. This is a quality property that demands your attention if you are in the market for a family home that will stand the test of time.

3  2  2 

**FOR SALE**

Sold

**VIEW**

[cromwell.ljhooker.co.nz/477H8G](https://cromwell.ljhooker.co.nz/477H8G)

**CONTACT**

**Peter Richards** 0274 482 214

**LJ HOOKER CROMWELL**

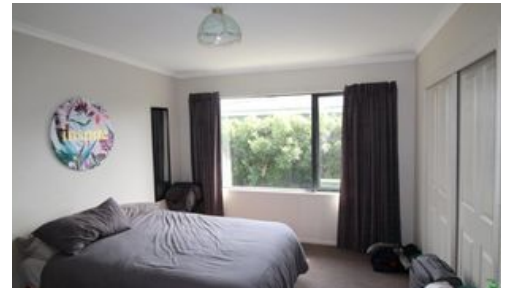
(03) 445 1261

To view all our listings please go to our website [www.cromwell.ljhooker.co.nz](http://www.cromwell.ljhooker.co.nz) (copy and paste link into your browser) or call us if you would like to receive new listings by email - 03 445 1261.

## More About this Property

<b>PROPERTY ID</b>	477H8G
<b>PROPERTY TYPE</b>	Residential
<b>LAND AREA</b>	1,012 m <sup>2</sup>
<b>HOUSE SIZE</b>	200.00 m <sup>2</sup>
<b>INCLUDING</b>	Air Conditioning, Secure Parking

Licensed Real Estate Agents (REAA2008)



## LJ Hooker Cromwell - MK Real Estate

CONTACT: Peter Richards  
EMAIL: [prichards.cromwell@ljh.co.nz](mailto:prichards.cromwell@ljh.co.nz)  
MOBILE: 0274 482 214  
PHONE: (03) 445 1261  
FAX: (03) 445 0421

### DISCLAIMER

The above information has been furnished to us by the Vendor. We have not verified whether or not that information is accurate and do not have any belief one way or the other in its accuracy. We do not accept any responsibility to any person for its accuracy and do no more than pass it on. All interested parties should make and rely upon their own enquiries in order to determine whether or not this information is in fact accurate.



[www.ljhooker.co.nz](http://www.ljhooker.co.nz)

Residential | Commercial | Rural | Land Sections | Coastal